

8" Chart Recorder

KT8-20 Temperature



8" chart recorder featuring an LCD display and Replaceable Sensor™ technology

Dickson 8-inch chart recorders offer the largest resolution out of any chart recorder. Featuring a large 8-inch chart and user-selectable recording time-frames and ranges, these units are compatible with Dickson's Replaceable Sensors™, making calibrating your chart recorder easier than ever.

- Display
- Audible Alarms

Sensor Specifications

Replaceable Sensor™	Single Thermistor (RS020)
Temperature Accuracy	±0.9°F from -58°F to 68°F (±0.5°C from -50°C to 20°C) ±1.2°F from 69°F to 122°F ±2°F over remaining range
Temperature Range	-58° to 158°F (-50°C to 70°C)

Specifications

Alarm Type	Audio/Visual
Ambient Operating RH Conditions	0-95% RH non-condensing
Ambient Operating Temperature Conditions	32°F to 120°F (0°C to 50°C)
Battery Backup	(4) C Batteries
Battery Life	1 Month (Avg)
Calibration Options	N100, N300, N400
Channels	CH1: Temperature
Chart Rotation Speed	24 Hour, 7 Day
Dimensions LxWxH	9 3/8"x2 3/4"x10 1/8"
Display Dimensions	5 1/8" x 1"
Display Type	LCD
Enclosure	Rugged Black ABS Case, Polycarbonate Door, Aluminum Dial
IP Rating	IP20
Included Accessories	AC Adapter, Red Pen, (4) C Batteries, Quick Start Guide and Replaceable Sensor™ *Charts sold separately
Mounting Options	Free Standing or Wall Mount (With Keyhole)
Power Cord	6 ft
Power Source	120 to 240 VAC, 12 VDC (INTL fittings available); AC Adapter
Power Status Indicator	LED Indicator
Unit Weight	2.45lbs without batteries
Warranty	12-Month Limited

8" Chart Recorder

KT8-21 Temperature



8" chart recorder featuring an LCD display and Replaceable Sensor™ technology

Dickson 8-inch chart recorders offer the largest resolution out of any chart recorder. Featuring a large 8-inch chart and user-selectable recording time-frames and ranges, these units are compatible with Dickson's Replaceable Sensors™, making calibrating your chart recorder easier than ever.

- Display
- Audible Alarms

Sensor Specifications

Replaceable Sensor™	Dual Thermistor (RS021)
Temperature Accuracy	±0.9°F from -58°F to 68°F (0.5°C from -50°C to 20°C) ±1.2°F from 69°F to 122°F ±2°F over remaining range
Temperature Range	-58°F to 158°F (-50°C to 70°C)

Specifications

Alarm Type	Audio/Visual
Ambient Operating RH Conditions	0-95% RH non-condensing
Ambient Operating Temperature Conditions	32°F to 120°F (0°C to 50°C)
Battery Backup	(4) C Batteries
Battery Life	1 Month (Avg)
Calibration Options	N100, N300, N400
Channels	CH1: Temperature CH2: Temperature
Chart Rotation Speed	24 Hour, 7 Day
Dimensions LxWxH	9 3/8"x2 3/4"x10 1/8"
Display Dimensions	5 1/8" x 1"
Display Type	LCD
Enclosure	Rugged Black ABS Case, Polycarbonate Door, Aluminum Dial
IP Rating	IP20
Included Accessories	AC Adapter, Red Pen, Blue Pen, (4) C Batteries, Quick Start Guide and Replaceable Sensor™ *Charts sold separately
Mounting Options	Free Standing or Wall Mount (With Keyhole)
Power Cord	6 ft
Power Source	120 to 240 VAC, 12 VDC (INTL fittings available); AC Adapter
Power Status Indicator	LED Indicator
Unit Weight	2.45lbs without batteries
Warranty	12-Month Limited

8" Chart Recorder

KT8-30 Temperature



8" chart recorder featuring an LCD display and Replaceable Sensor™ technology

Dickson 8-inch chart recorders offer the largest resolution out of any chart recorder. Featuring a large 8-inch chart and user-selectable recording time-frames and ranges, these units are compatible with Dickson's Replaceable Sensors™, making calibrating your chart recorder easier than ever.

- Display
- Audible Alarms

Sensor Specifications

Replaceable Sensor™	Single K-Thermocouple (RS030)
Temperature Accuracy	±1.8°F from -300°F to 122°F (±1°C from -185°C to 50°C) ±3.8°F (±2.1°C) remaining range
Temperature Range	-300°F to 2000°F (-185°C to 1093°C)

Specifications

Alarm Type	Audio/Visual
Ambient Operating RH Conditions	0-95% RH non-condensing
Ambient Operating Temperature Conditions	32°F to 120°F (0°C to 50°C)
Battery Backup	(4) C Batteries
Battery Life	1 Month (Avg)
Calibration Options	N100, N300, N400
Channels	CH1: Temperature
Chart Rotation Speed	24 Hour, 7 Day
Dimensions LxWxH	9 3/8"x2 3/4"x10 1/8"
Display Dimensions	5 1/8" x 1"
Display Type	LCD
Enclosure	Rugged Black ABS Case, Polycarbonate Door, Aluminum Dial
IP Rating	IP20
Included Accessories	AC Adapter, Red Pen, (4) C Batteries, Quick Start Guide and Replaceable Sensor™ *Charts sold separately
Mounting Options	Free Standing or Wall Mount (With Keyhole)
Power Cord	6 ft
Power Source	120 to 240 VAC, 12 VDC (INTL fittings available); AC Adapter
Power Status Indicator	LED Indicator
Unit Weight	2.45lbs without batteries
Warranty	12-Month Limited

8" Chart Recorder

KT8-30R Temperature



8" chart recorder featuring an LCD display and Replaceable Sensor™ technology

Dickson 8-inch chart recorders offer the largest resolution out of any chart recorder. Featuring a large 8-inch chart and user-selectable recording time-frames and ranges, these units are compatible with Dickson's Replaceable Sensors™, making calibrating your chart recorder easier than ever.

- Display
- Audible Alarms
- Relays

Sensor Specifications

Replaceable Sensor™	Single K-Thermocouple (RS030)
Temperature Accuracy	±1.8°F from -300°F to 122°F (±1°C from -185°C to 50°C) ±3.8°F (±2.1°C) remaining range
Temperature Range	-300°F to 2000°F (-185°C to 1093°C)

Specifications

Alarm Type	Audio/Visual
Ambient Operating RH Conditions	0-95% RH non-condensing
Ambient Operating Temperature Conditions	32°F to 120°F (0°C to 50°C)
Battery Backup	(4) C Batteries
Battery Life	1 Month (Avg)
Calibration Options	N100, N300, N400
Channels	CH1: Temperature
Chart Rotation Speed	24 Hour, 7 Day
Dimensions LxWxH	9 3/8"x2 3/4"x10 1/8"
Display Dimensions	5 1/8" x 1"
Display Type	LCD
Enclosure	Rugged Black ABS Case, Polycarbonate Door, Aluminum Dial
IP Rating	IP20
Included Accessories	AC Adapter, Red Pen, (4) C Batteries, Quick Start Guide and Replaceable Sensor™ *Charts sold separately
Mounting Options	Free Standing or Wall Mount (With Keyhole)
Power Cord	6 ft
Power Source	120 to 240 VAC, 12 VDC (INTL fittings available); AC Adapter
Power Status Indicator	LED Indicator
Unit Weight	2.45lbs without batteries
Warranty	12-Month Limited

8" Chart Recorder

KT8-31R Temperature



8" chart recorder featuring an LCD display and Replaceable Sensor™ technology

Dickson 8-inch chart recorders offer the largest resolution out of any chart recorder. Featuring a large 8-inch chart and user-selectable recording time-frames and ranges, these units are compatible with Dickson's Replaceable Sensors™, making calibrating your chart recorder easier than ever.

- Display
- Audible Alarms
- Relays

Sensor Specifications

Replaceable Sensor™	Dual K-Thermocouple (RS031)
Temperature Accuracy	±1.8°F from -300°F to 122°F (±1°C from -185°C to 50°C) ±3.8°F (±2.1°C) remaining range
Temperature Range	-300°F to 2000°F (-185°C to 1093°C)

Specifications

Alarm Type	Audio/Visual
Ambient Operating RH Conditions	0-95% RH non-condensing
Ambient Operating Temperature Conditions	32°F to 120°F (0°C to 50°C)
Battery Backup	(4) C Batteries
Battery Life	1 Month (Avg)
Calibration Options	N100, N300, N400
Channels	CH1: Temperature CH2: Temperature
Chart Rotation Speed	24 Hour, 7 Day
Dimensions LxWxH	9 3/8"x2 3/4"x10 1/8"
Display Dimensions	5 1/8" x 1"
Display Type	LCD
Enclosure	Rugged Black ABS Case, Polycarbonate Door, Aluminum Dial
IP Rating	IP20
Included Accessories	AC Adapter, Red Pen, Blue Pen, (4) C Batteries, Quick Start Guide and Replaceable Sensor™ *Charts sold separately
Mounting Options	Free Standing or Wall Mount (With Keyhole)
Power Cord	6 ft
Power Source	120 to 240 VAC, 12 VDC (INTL fittings available); AC Adapter
Power Status Indicator	LED Indicator
Unit Weight	2.45lbs without batteries
Warranty	12-Month Limited

8" Chart Recorder

KT8-40 Temperature



8" chart recorder featuring an LCD display and Replaceable Sensor™ technology

Dickson 8-inch chart recorders offer the largest resolution out of any chart recorder. Featuring a large 8-inch chart and user-selectable recording time-frames and ranges, these units are compatible with Dickson's Replaceable Sensors™, making calibrating your chart recorder easier than ever.

- Display
- Audible Alarms

Sensor Specifications

Replaceable Sensor™	Platinum RTD (RS040)
Temperature Accuracy	±0.5°F from -148°F to 350°F (± 0.3°C from -100°C to 176°C)
Temperature Range	-148°F to 350°F (-100°C to 176°C)

Specifications

Alarm Type	Audio/Visual
Ambient Operating RH Conditions	0-95% RH non-condensing
Ambient Operating Temperature Conditions	32°F to 120°F (0°C to 50°C)
Battery Backup	(4) C Batteries
Battery Life	1 Month (Avg)
Calibration Options	N100, N300, N400
Channels	CH1: Temperature
Chart Rotation Speed	24 Hour, 7 Day
Dimensions LxWxH	9 3/8"x2 3/4"x10 1/8"
Display Dimensions	5 1/8" x 1"
Display Type	LCD
Enclosure	Rugged Black ABS Case, Polycarbonate Door, Aluminum Dial
IP Rating	IP20
Included Accessories	AC Adapter, Red Pen, (4) C Batteries, Quick Start Guide and Replaceable Sensor™ *Charts sold separately
Mounting Options	Free Standing or Wall Mount (With Keyhole)
Power Cord	6 ft
Power Source	120 to 240 VAC, 12 VDC (INTL fittings available); AC Adapter
Power Status Indicator	LED Indicator
Unit Weight	2.45lbs without batteries
Warranty	12-Month Limited

8" Chart Recorder

KT8-50 Temperature



8" chart recorder featuring an LCD display and Replaceable Sensor™ technology

Dickson 8-inch chart recorders offer the largest resolution out of any chart recorder. Featuring a large 8-inch chart and user-selectable recording time-frames and ranges, these units are compatible with Dickson's Replaceable Sensors™, making calibrating your chart recorder easier than ever.

- Display
- Audible Alarms

Sensor Specifications

Replaceable Sensor™	Ambient Temperature (RS050)
Temperature Accuracy	±1.2°F from 20°F to 122°F (±1°C from -30°C to 50°C)
Temperature Range	-22°F to 122°F (-30°C to 50°C)

Specifications

Alarm Type	Audio/Visual
Ambient Operating RH Conditions	0-95% RH non-condensing
Ambient Operating Temperature Conditions	32°F to 120°F (0°C to 50°C)
Battery Backup	(4) C Batteries
Battery Life	1 Month (Avg)
Calibration Options	N100, N300, N400
Channels	CH1: Temperature
Chart Rotation Speed	24 Hour, 7 Day
Dimensions LxWxH	9 3/8"x2 3/4"x10 1/8"
Display Dimensions	5 1/8" x 1"
Display Type	LCD
Enclosure	Rugged Black ABS Case, Polycarbonate Door, Aluminum Dial
IP Rating	IP20
Included Accessories	AC Adapter, Red Pen, (4) C Batteries, Quick Start Guide and Replaceable Sensor™ *Charts sold separately
Mounting Options	Free Standing or Wall Mount (With Keyhole)
Power Cord	6 ft
Power Source	120 to 240 VAC, 12 VDC (INTL fittings available); AC Adapter
Power Status Indicator	LED Indicator
Unit Weight	2.45lbs without batteries
Warranty	12-Month Limited

8" Chart Recorder

TH8-10 Temperature & Humidity



8" chart recorder featuring an LCD display and Replaceable Sensor™ technology

Dickson 8-inch chart recorders offer the largest resolution out of any chart recorder. Featuring a large 8-inch chart and user-selectable recording time-frames and ranges, these units are compatible with Dickson's Replaceable Sensors™, making calibrating your chart recorder easier than ever.

- Display
- Audible Alarms

Sensor Specifications

Replaceable Sensor™	Ambient Temperature & Humidity (RS010)
Humidity Accuracy	±2.0% RH from 5% to 95% RH
Temperature Accuracy	±0.8°F (±.44°C) from 20°F to 122°F ±1.8°F (±1°C) remaining range
Temperature Range	32°F to 120°F (0°C to 50°C)

Specifications

Alarm Type	Audio/Visual
Ambient Operating RH Conditions	0-95% RH non-condensing
Ambient Operating Temperature Conditions	32°F to 120°F (0°C to 50°C)
Battery Backup	(4) C Batteries
Battery Life	1 Month (Avg)
Calibration Options	N100, N300, N400
Channels	CH1: Temperature CH2: Humidity
Chart Rotation Speed	24 Hour, 7 Day
Dimensions LxWxH	9 3/8"x2 3/4"x10 1/8"
Display Dimensions	5 1/8" x 1"
Display Type	LCD
Enclosure	Rugged Black ABS Case, Polycarbonate Door, Aluminum Dial
IP Rating	IP20
Included Accessories	AC Adapter, Red Pen, Blue Pen, (4) C Batteries, Quick Start Guide and Replaceable Sensor™ *Charts sold separately
Mounting Options	Free Standing or Wall Mount (With Keyhole)
Power Cord	6 ft
Power Source	120 to 240 VAC, 12 VDC (INTL fittings available); AC Adapter
Power Status Indicator	LED Indicator
Unit Weight	2.45lbs without batteries
Warranty	12-Month Limited

8" Chart Recorder

TH8-11 Temperature & Humidity



8" chart recorder featuring an LCD display and Replaceable Sensor™ technology

Dickson 8-inch chart recorders offer the largest resolution out of any chart recorder. Featuring a large 8-inch chart and user-selectable recording time-frames and ranges, these units are compatible with Dickson's Replaceable Sensors™, making calibrating your chart recorder easier than ever.

- Display
- Audible Alarms
- Extension Cable

Sensor Specifications

Replaceable Sensor™	Ambient Temperature & Humidity (RS010)
Humidity Accuracy	±2.0% RH from 5% to 95% RH
Temperature Accuracy	±0.8°F (±.44°C) from 20°F to 122°F ±1.8°F (±1°C) remaining range
Temperature Range	-40°F to 185°F (-40°C to 85°C)

Specifications

Alarm Type	Audio/Visual
Ambient Operating RH Conditions	0-95% RH non-condensing
Ambient Operating Temperature Conditions	32°F to 120°F (0°C to 50°C)
Battery Backup	(4) C Batteries
Battery Life	1 Month (Avg)
Calibration Options	N100, N300, N400
Channels	CH1: Temperature CH2: Humidity
Chart Rotation Speed	24 Hour, 7 Day
Dimensions LxWxH	9 3/8"x2 3/4"x10 1/8"
Display Dimensions	5 1/8" x 1"
Display Type	LCD
Enclosure	Rugged Black ABS Case, Polycarbonate Door, Aluminum Dial
IP Rating	IP20
Included Accessories	AC Adapter, Red Pen, Blue Pen, (4) C Batteries, Quick Start Guide and Replaceable Sensor™ *Charts sold separately
Mounting Options	Free Standing or Wall Mount (With Keyhole)
Power Cord	6 ft
Power Source	120 to 240 VAC, 12 VDC (INTL fittings available); AC Adapter
Power Status Indicator	LED Indicator
Unit Weight	2.45lbs without batteries
Warranty	12-Month Limited

8" Chart Recorder

TH8-11R Temperature & Humidity



8" chart recorder featuring an LCD display and Replaceable Sensor™ technology

Dickson 8-inch chart recorders offer the largest resolution out of any chart recorder. Featuring a large 8-inch chart and user-selectable recording time-frames and ranges, these units are compatible with Dickson's Replaceable Sensors™, making calibrating your chart recorder easier than ever.

- Display
- Audible Alarms
- Extension Cable
- Relays

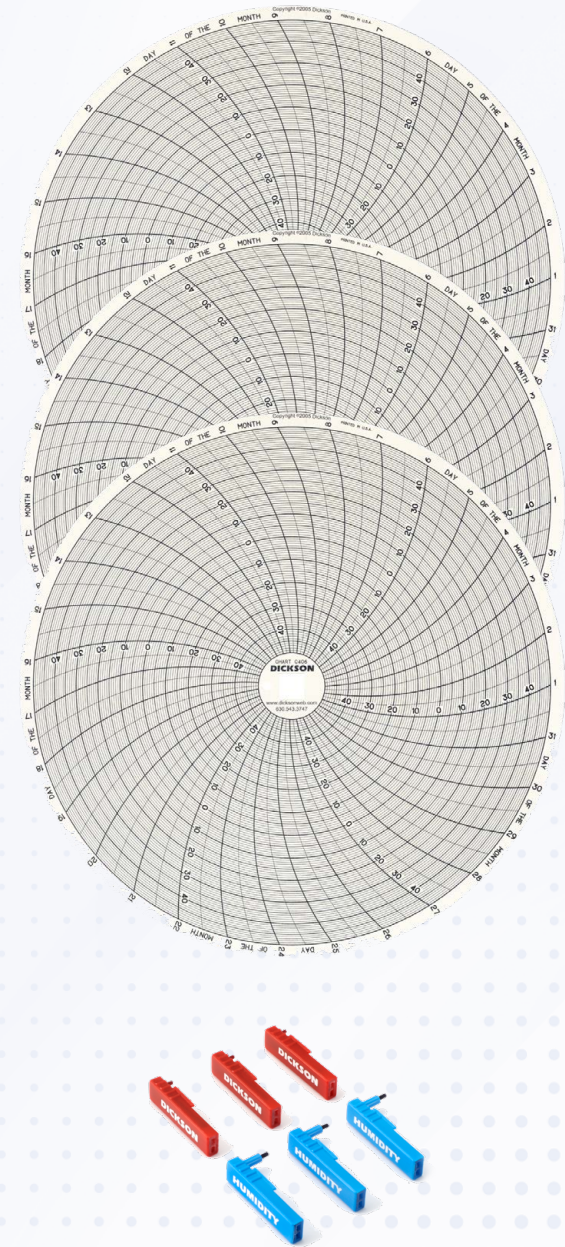
Sensor Specifications

Replaceable Sensor™	Ambient Temperature & Humidity (RS010)
Humidity Accuracy	±2.0% RH from 5% to 95% RH
Temperature Accuracy	±0.8°F (±.44C) from 20°F to 122°F ±1.8°F (±1°C) remaining range
Temperature Range	-40°F to 185°F (-40°C to 85°C)

Specifications

Alarm Type	Audio/Visual
Ambient Operating RH Conditions	0-95% RH non-condensing
Ambient Operating Temperature Conditions	32°F to 120°F (0°C to 50°C)
Battery Backup	(4) C Batteries
Battery Life	1 Month (Avg)
Calibration Options	N100, N300, N400
Channels	CH1: Temperature CH2: Humidity
Chart Rotation Speed	24 Hour, 7 Day
Dimensions LxWxH	9 3/8"x2 3/4"x10 1/8"
Display Dimensions	5 1/8" x 1"
Display Type	LCD
Enclosure	Rugged Black ABS Case, Polycarbonate Door, Aluminum Dial
IP Rating	IP20
Included Accessories	AC Adapter, Red Pen, Blue Pen, (4) C Batteries, Quick Start Guide and Replaceable Sensor™ *Charts sold separately
Mounting Options	Free Standing or Wall Mount (With Keyhole)
Power Cord	6 ft
Power Source	120 to 240 VAC, 12 VDC (INTL fittings available); AC Adapter
Power Status Indicator	LED Indicator
Unit Weight	2.45lbs without batteries
Warranty	12-Month Limited

■ Charts & Pens



SKU	Description	Variable
P222	6 red pens	Temperature
P226	6 blue pens	Humidity
P246	3 red, 3 blue pens	Temperature & humidity
P266	3 red, 3 blue pens	Dual channel

Model	Range	24 Hour Charts	7 Day Charts
KT8-20 KT8-21	-100° TO 0°F/C	C497	C499
	-20° TO 20°F/C	C445	C448
	-50° TO 50°F/C	C411	C414
	0° TO 100°F/C	C410	C412
	0° TO 150°F	C425	C435
	0° TO 250°F	C432	C439
	20° TO 100°F/C	C446	C449
KT8-30 KT8-31	50° TO 150°F	C447	C450
	-100° TO 0°F/C	C497	C499
	-50° TO 50°F/C	C411	C414
	-20° TO 20°F/C	C445	C448
	0° TO 100°F/C	C410	C412
	0° TO 150°F/C	C425	C435
	0° TO 250°F/C	C432	C439
	0° TO 500°F/C	C428	C459
	0° TO 1000°F/C**	C441	C440
	0° TO 2000°F**	C443	C444
KT8-40	20° TO 100°F/C	C446	C449
	50° TO 150°F	C447	C450
	-100° TO 0°F/C	C497	C499
	-50° TO 50°F/C	C411	C414
	-20° TO 20°F/C	C445	C448
	0° TO 100°F/C	C410	C412
	0° TO 150°F/C	C425	C435
	0° TO 250°F/C	C432	C439
	0° TO 500°F	C428	C459
	20° TO 100°F/C	C446	C449
KT8-50	50° TO 150°F	C447	C450
	-50° TO 50°F/C	C411	C414
	-20° TO 20°F/C	C445	C448
	0° TO 100°F/C	C410	C412
	0° TO 150°F/C	C425	C435
	0° TO 250°F/C	C432	C439
	20° TO 100°F/C	C446	C449
TH8-10	50° TO 150°F	C447	C450
	-20°F TO 120°F*	C415	C417
	-20°C TO 50°C*	C472	C473
	40°F TO 110°F	C476	C477
	5°C TO 40°C	C478	C479
TH8-11 TH8-11R TH8-12	5°C TO 40°C	C478	C479
	0° TO 200°F	-	C437
	-20°F TO 120°F*	C415	C417
	-20°C TO 50°C*	C472	C473
	40°F TO 110°F	C476	C477

*Full range requires 10' extension cable // **A203 High temp probe required