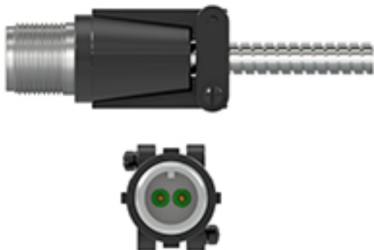


R2H Series

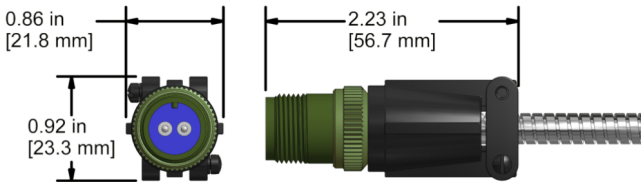
2 Pin MIL-Spec Connector, for Use with Armor Jacketed Cables,
Permanent Mount, 250 °F (121 °C) Max Temp



Product Features

Designed to Build Extension Cables with 2
Conductor, Armor Jacketed Cabling

- ▶ Mates with with CTC 2 Socket MIL-Style Connectors
- ▶ Designed to Withstand a Wide Variety of Industrial Applications
- ▶ Creates an IP66 Rated Seal



Specifications

Application	Portable Measurements, Permanent Mount
Max Temperature	250° F(121° C)
Connector Type	2 Pin MIL-Style
Shell Material	Zinc Alloy
Connector Insert Material	Stainless Steel-316L
Rating	IP66
Pin-Out	A = Signal (+) B = Common (-)

Built to Order